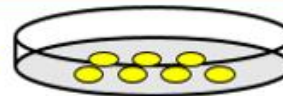


Company**Novumcella Inc.****Presenter****Yasuyuki
Kusuhara**

- **Novumcella Inc. is a bio-venture which develops regenerative medicine products and provides CRO services, such as medical big data analysis and PMDA consultation supports etc.**
- **Our development candidate, NC-301 is an unique adipose derived MSC with co-cultured with statin-encapsulated PLGA nanoparticles.**
- **There are six candidate indications, such as systemic sclerolosis, osteoarthritis of the knee, ulcerative colitis, interstitial neumonia, dementia and schizophrenia.**
- **Please come to our booth, V-66, if you have interest in our technologies.**

Statin-encapsulated PLGA Nanoparticle Incorporation & Drug Release of Adipose Stem Cells


Adipose stem cells

Statin-PLGA nanoparticles

 Co-culture of particles and adipose stem cells for
 30 minutes

Blue color: nucleus

 Red: PLGA nanoparticles (100 μ g / ml)

Statin-PLGA nanoparticle-conjugated adipose stem cells
